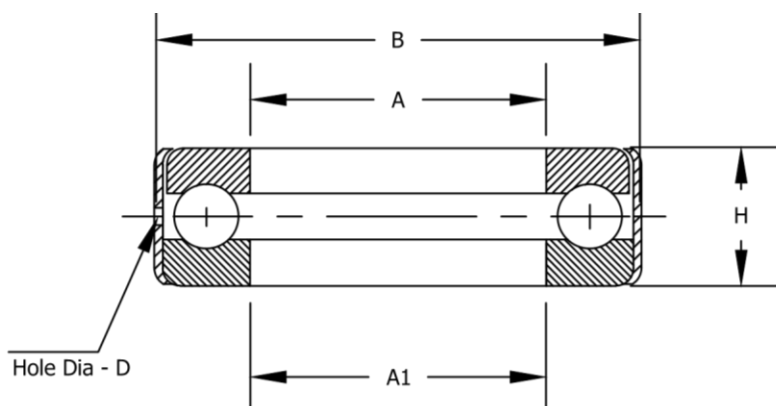




D Series



Ball Thrust Bearing

Banded Assembly – Non-Separable
 Single Direction - Flat Seat Design
 Grooved Races
 Oil Hole in Band
 Inch Dimensions

Limiting speed is shown for oil lubrication

BEARING NUMBER	A +.002 -.000	A1 +.010 -.010	B +.015 -.015	H +.005 -.005	BALLS	LOAD RATING (lbs.)		LIMITING SPEED	BEARING WEIGHT Lbs.
					NO.	Static	Dynamic		
D1	.503	.531	1.219	.563	10	5600	3850	6500	.119
D2	.566	.594	1.219	.563	10	5600	3850	6500	.113
D3	.628	.656	1.344	.563	12	6700	4100	5850	.138
D4	.691	.719	1.344	.563	12	6700	4100	5850	.180
D5	.753	.781	1.469	.563	13	7300	4250	5250	.154
D6	.816	.844	1.469	.563	13	7300	4250	5250	.144
D7	.878	.906	1.844	.625	14	12200	6600	4000	.278
D8	.941	.969	1.844	.625	14	12200	6600	4000	.266
D9	1.003	1.031	1.969	.625	15	13100	6700	3700	.303
D10	1.066	1.094	1.969	.625	15	13100	6700	3700	.285
D11	1.128	1.156	2.094	.625	16	14000	6900	3500	.328
D12	1.191	1.219	2.094	.625	16	14000	6900	3500	.314
D13	1.253	1.281	2.344	.625	18	15700	7200	3000	.407
D14	1.316	1.344	2.344	.625	18	15700	7200	3000	.397
D15	1.378	1.406	2.469	.625	19	16600	7300	2750	.452
D16	1.441	1.469	2.469	.625	19	16600	7300	2750	.421
D17	1.503	1.531	2.594	.625	21	18300	7700	2400	.460
D18	1.566	1.594	2.594	.625	21	18300	7700	2400	.442
D19	1.628	1.656	2.969	.813	20	25000	10300	2000	.850
D20	1.691	1.719	2.969	.813	20	25000	10300	2000	.838

Northeast
 Hauppauge, NY
 1 (800) 645-5088

Southeast
 Atlanta, GA
 1 (800) 247-9920

Midwest
 Chicago, IL
 1 (800) 325-9696

Columbus, OH
 1 (888) 700-9144

Southwest
 Houston, TX
 1 (800) 233-5567

Dallas, TX
 1 (800) 500-1015

West Coast
 Los Angeles, CA
 1 (800) 722-0655



D Series

D Series – Ball Thrust Bearing - Continued

BEARING NUMBER	A	A1	B	H	BALLS	LOAD RATING (lbs.)		LIMITING SPEED	BEARING WEIGHT Lbs.
	+0.02 -0.00	+0.010 -0.010	+0.015 -0.015	+0.005 -0.005	NO.	Static	Dynamic		
D21	1.753	1.781	3.094	.813	21	26500	10600	1950	.887
D22	1.816	1.844	3.094	.813	21	26500	10600	1950	.862
D23	1.878	1.906	3.219	.813	22	27500	10800	1925	.931
D24	1.941	1.969	3.219	.813	22	27500	10800	1925	.907
D25	2.003	2.031	3.344	.813	23	29000	10800	1875	.975
D26	2.066	2.094	3.344	.813	23	29000	10800	1875	.950
D27	2.128	2.156	3.594	.813	24	30000	11100	1800	1.160
D28	2.191	2.219	3.594	.813	24	30000	11100	1800	1.100
D29	2.253	2.281	3.719	.813	25	31500	11200	1775	1.190
D30	2.316	2.344	3.719	.813	25	31500	11200	1775	1.140
D31	2.378	2.406	3.844	.813	26	32500	11500	1760	1.250
D32	2.441	2.469	3.844	.813	26	32500	11500	1760	1.200
D33	2.503	2.531	3.969	.813	27	34000	11500	1750	1.280
D34	2.566	2.594	3.969	.813	27	34000	11500	1750	1.230
D35	2.628	2.656	4.344	1.000	22	49000	18100	1500	1.930
D36	2.691	2.719	4.344	1.000	22	49000	18100	1500	1.950
D37	2.753	2.781	4.469	1.000	23	51000	18200	1475	2.100
D38	2.816	2.844	4.469	1.000	23	51000	18200	1475	2.030
D39	2.941	2.969	4.594	1.000	23	51000	18200	1460	2.130
D39 1/2	3.003	3.063	4.594	1.000	23	51000	18200	1460	2.100
D40	3.003	3.031	4.719	1.000	23	54000	18700	1430	2.250
D41	3.253	3.281	4.969	1.000	25	56000	18800	1420	2.430
D42	3.503	3.531	5.219	1.000	27	60000	19200	1400	2.530

Materials: Rings and balls are constructed of thru-hardened 52100 steel.
Band is constructed of high quality low carbon steel.

Bearings are supplied with light oil lubrication. Grease lubrication is available upon request and subject to minimums and production lead times.



Northeast
Hauppauge, NY
1 (800) 645-5088

Southeast
Atlanta, GA
1 (800) 247-9920

Midwest
Chicago, IL
1 (800) 325-9696

Midwest
Columbus, OH
1(888)700-9144

Southwest
Houston, TX
1(800)233-5567

Southwest
Dallas, TX
1(800)500-1015

West Coast
Los Angeles, CA
1 (800) 722-0655