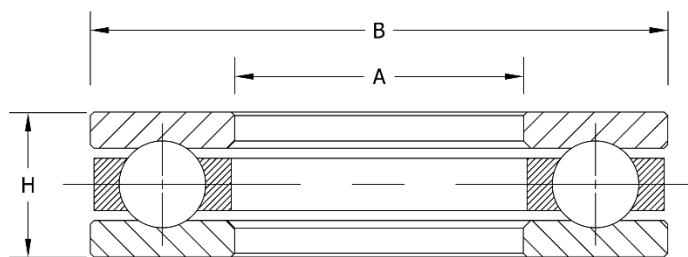




XW Series

Ball Thrust Bearing

- Light Cross Section
- Grooved Race
- Single Direction
- Separable Axial Contact



PART NUMBER	SHAFT d inch	SHAFT d mm	OD D inch	OD D mm	WIDTH T inch	WIDTH T mm	WEIGHT lbs	WEIGHT kg	DYN. CAP. lbf	STAT. CAP. lbf	SPEED LIMIT rpm
XW2	2.000	50.800	3.063	77.800	0.688	17.480	0.617	0.280	6300	15570	3000
XW2 1/8	2.125	53.975	3.188	80.980	0.688	17.480	0.690	0.313	6300	15570	3000
XW2 1/4	2.250	57.150	3.352	85.150	0.688	17.480	0.712	0.323	5220	13950	2800
XW2 3/8	2.375	60.325	3.438	87.330	0.688	17.480	0.770	0.349	5220	13950	2800
XW2 1/2	2.500	63.500	3.563	90.500	0.688	17.480	0.759	0.344	5400	15210	2600
XW2 5/8	2.625	66.675	3.750	92.250	0.750	19.050	0.893	0.405	5850	15570	2500
XW2 3/4	2.750	69.850	3.875	98.430	0.750	19.050	0.924	0.419	5760	15570	2400
XW2 7/8	2.875	73.025	4.000	101.600	0.750	19.050	1.100	0.499	6030	17190	2300
XW3	3.00	76.200	4.125	104.770	0.750	19.050	1.021	0.463	8460	26280	2200
XW3 1/8	3.125	79.375	4.250	107.950	0.750	19.050	1.052	0.477	8460	26280	2200
XW3 1/4	3.250	82.550	4.375	111.130	0.750	19.050	1.069	0.485	6300	18630	2100
XW3 3/8	3.375	85.725	4.5000	114.300	0.750	19.050	1.301	0.590	6300	18630	2100
XW3 1/2	3.500	88.900	4.625	117.480	0.750	19.050	1.140	0.517	6390	20250	1900
XW3 5/8	3.625	92.075	4.750	120.650	0.750	19.050	1.171	0.531	6390	20250	1900
XW3 3/4	3.750	95.250	4.875	123.820	0.750	19.050	1.213	0.550	6660	21870	1800
XW3 7/8	3.875	98.425	5.000	127.000	0.750	19.050	1.244	0.564	6660	21870	1800
XW4	4.000	101.600	5.250	133.350	0.875	22.225	1.707	0.774	9630	31500	1700
XW4 1/4	4.250	107.950	5.500	139.700	0.875	22.225	1.819	0.825	10530	36000	1600
XW4 1/2	4.500	114.300	5.750	146.050	1.000	25.400	2.289	1.038	10890	40500	1500
XW4 3/4	4.750	120.650	6.000	152.400	1.000	25.400	2.386	1.082	10890	40500	1500

Northeast
Hauppauge, NY
1 (800) 645-5088

Southeast
Atlanta, GA
1 (800) 247-9920

Midwest
Chicago, IL
1 (800) 325-9696

Columbus, OH
1 (888) 700-9144

Southwest
Houston, TX
1 (800) 233-5567

Dallas, TX
1 (800) 500-1015

West Coast
Los Angeles, CA
1 (800) 722-0655



XW Series

XW Series – Ball Thrust Bearing - Continued

PART NUMBER	SHAFT d inch	SHAFT d mm	OD D inch	OD D mm	WIDTH T inch	WIDTH T mm	WEIGHT lbs	WEIGHT kg	DYN. CAP. lbf	STAT. CAP. lbf	SPEED LIMIT rpm
XW5	5.000	127.000	6.500	165.100	1.018	25.850	2.926	1.327	12780	42750	1400
XW5 1/4	5.250	133.350	6.750	171.450	1.125	28.580	3.497	1.586	12780	45900	1300
XW5 1/2	5.500	139.700	7.000	177.800	1.007	25.580	3.799	1.723	12780	45900	1300
XW5 3/4	5.750	146.050	7.250	184.150	1.125	28.580	3.872	1.715	13320	48600	1200
XW6	6.000	152.400	7.625	193.680	1.250	31.750	4.772	2.164	16200	59400	1200
XW6 1/2	6.500	165.100	8.125	206.380	1.250	31.750	5.118	2.321	17010	63900	1100
XW7	7.000	177.800	8.750	222.250	1.375	34.930	6.505	2.950	20070	75600	1000
XW7 1/2	7.500	190.500	9.250	234.950	1.375	34.930	7.100	3.220	20880	81000	950
XW8	8.000	203.200	10.000	254.000	1.500	38.100	9.400	4.263	17370	63900	850
XW8 1/2	8.500	215.900	10.500	266.700	1.500	38.100	9.744	4.419	26280	105300	850
XW9	9.000	228.600	11.250	285.750	1.875	47.625	15.199	6.893	35190	144000	800
XW9 1/2	9.500	241.300	11.750	298.450	1.875	47.625	15.790	7.161	36630	152100	750
XW10	10.000	254.000	12.500	317.500	2.125	53.975	21.148	9.591	48600	196200	700
XW10 1/2	10.500	266.700	13.000	330.200	2.125	53.975	22.200	10.068	48600	208800	650
XW11	11.000	279.400	13.750	349.250	2.375	60.320	28.702	13.017	54900	225000	650



Materials: Rings and balls are constructed of thru-hardened 52100 steel. Cages are constructed of machined steel or bronze.

Northeast
Hauppauge, NY
1 (800) 645-5088

Southeast
Atlanta, GA
1 (800) 247-9920

Midwest
Chicago, IL
1 (800) 325-9696

Columbus, OH
1 (888) 700-9144

Southwest
Houston, TX
1 (800) 233-5567

Dallas, TX
1 (800) 500-1015

West Coast
Los Angeles, CA
1 (800) 722-0655