



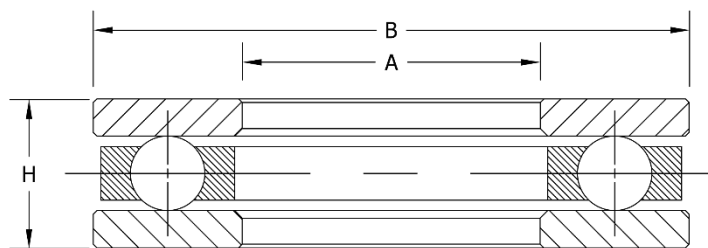
# EW Series

## Ball Thrust Bearing

Light Cross Section

Flat Race

Single Direction



PART NUMBER	SHAFT A inch	SHAFT A mm	OD B inch	OD B mm	WIDTH H inch	WIDTH H mm	WEIGHT lbs	WEIGHT g	DYN. CAP. lbf	STAT. CAP. lbf	SPEED LIMIT rpm
EW1/4	0.250	6.350	0.656	16.662	0.250	6.350	0.020	9.07	257	91	18000
EW5/16	0.313	7.938	0.750	19.050	0.250	6.350	0.018	7.94	292	121	15000
EW3/8	0.375	9.525	0.813	20.650	0.250	6.350	0.019	8.77	279	121	13000
EW1/2	0.500	12.700	0.969	24.610	0.250	6.350	0.026	11.79	351	181	11000
EW5/8	0.625	15.875	1.094	27.788	0.281	7.140	0.033	15.00	468	234	9500
EW3/4	0.750	19.050	1.313	33.350	0.281	7.140	0.047	21.11	495	284	7500
EW7/8	0.875	22.225	1.500	38.100	0.375	9.525	0.085	38.38	702	410	6500
EW1	1.000	25.400	1.625	41.280	0.375	9.530	0.092	41.90	684	410	6000
EW1 1/8	1.125	28.575	1.750	44.450	0.375	9.530	0.102	46.25	729	477	5500
EW1 1/4	1.250	31.750	2.063	52.400	0.500	12.700	0.204	92.67	1170	729	4800
EW1 3/8	1.375	34.925	2.188	55.575	0.500	12.700	0.222	100.79	1260	846	4400
EW1 1/2	1.500	38.100	2.313	58.750	0.500	12.700	0.242	109.95	1422	1026	4300
EW1 5/8	1.625	41.275	2.438	61.930	0.500	12.700	0.254	114.99	1323	963	3900
EW1 3/4	1.750	44.450	2.625	66.675	0.625	15.875	0.387	175.66	1656	1224	3600
EW1 7/8	1.875	47.625	2.750	69.850	0.625	15.875	0.406	184.34	1629	1224	3400
EW2	2.000	50.800	2.875	73.020	0.625	15.875	0.427	193.62	1602	1224	3200



**Materials:** Rings and balls are constructed of thru-hardened 52100 steel. Retainer is pressed steel. Bronze (M) or plastic (TN) retainers are also available subject to production lead time and minimums.

Northeast  
Hauppauge, NY  
1 (800) 645-5088

Southeast  
Atlanta, GA  
1 (800) 247-9920

Midwest  
Chicago, IL  
1 (800) 325-9696

Columbus, OH  
1 (888) 700-9144

Southwest  
Houston, TX  
1 (800) 233-5567

Dallas, TX  
1 (800) 500-1015

West Coast  
Los Angeles, CA  
1 (800) 722-0655